

Landscape Painting Assignment:

Name: _____

Page _____

You will be designing a landscape using paint. You will need to plan out your landscape thoroughly. You will have to work in sections at a time, plan out where you need white areas and more.

1. Draw out a sketch. The painting will be 6 x 12 inches; therefore your sketch needs to be drawn in that size. Once your sketch is completed, see the teacher for your paper.



2. Using masking tape, tape the edges of your paper in order to create a frame - It will be taped to your desk.



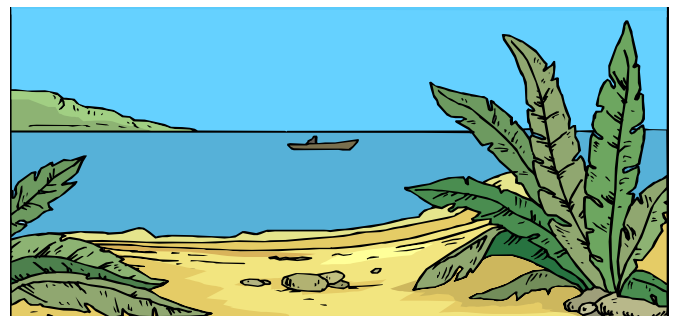
3. Draw lightly with your pencil the outline of your landscape. Sometimes it is best to use colour pencil

4. Tape any areas that you would like to keep light (sun, moon, stars, etc..)

5. Start with the background first, then work toward the front of the landscape.

6. Use all the different techniques that we learned about in class. Explore the different possibilities.

7. When finished and dried remove the tape carefully. Complete any final touches that are necessary (*if the tape ripped your artwork, you may have to touch your painting up a bit*)



Communication	Thinking	Application	Application
10 Marks	15 Marks	10 marks	30 marks
demonstrate understanding of topic under study	select tools, materials, processes, and technologies for art production	apply the elements of design to your work	complete studio projects in fine art and applied design using the creative process -neat & presentable