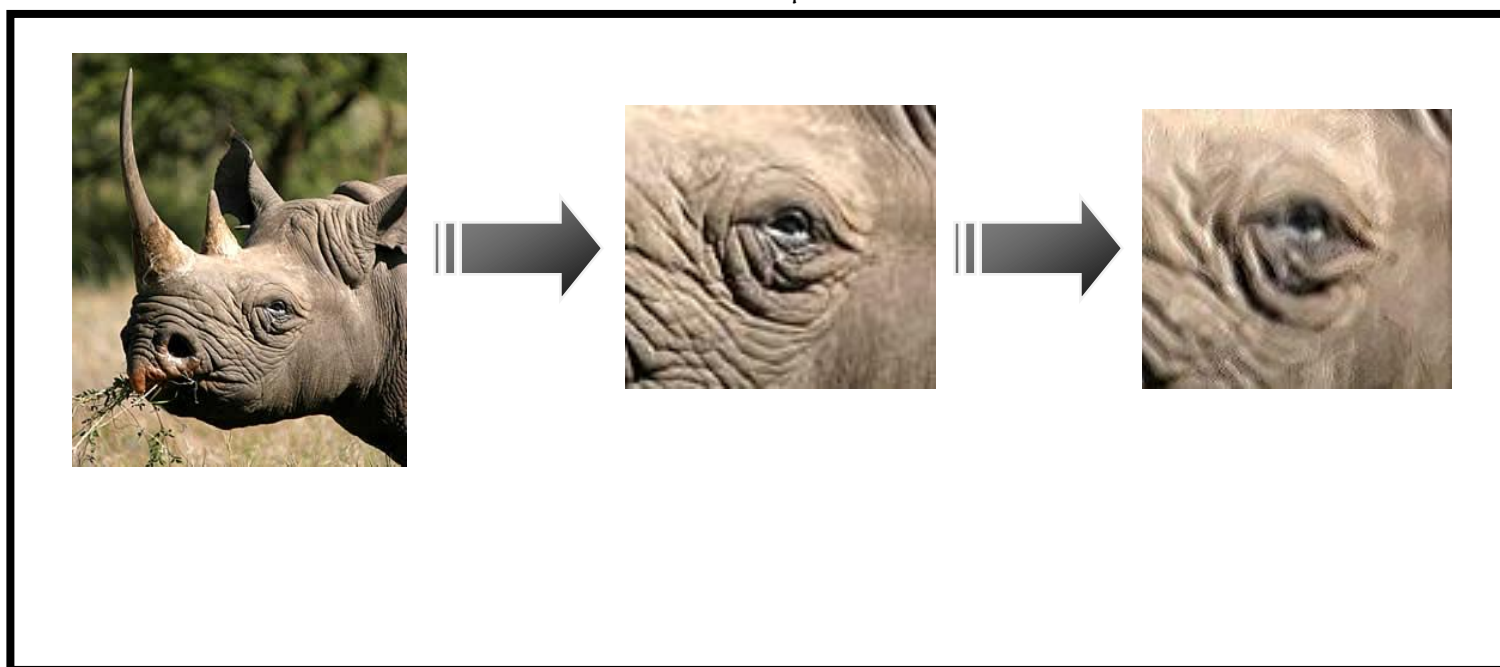


# Animal Zoom Painting:

/60

- You will choose an image of an animal.
- Within this image you will choose one part of the animal and zoom into this area and paint it.
- You are expected to bring in an image or borrow one from the classroom supply. The image is needed to compare to & in order to ensure you are using it as a reference as you paint.
- Upon choosing your image you must consider the following information:
  - What colours will you need?
  - What parts are interesting
    - Choose one of these parts to focus on.



The classroom has plenty of books, pictures, and magazines to search through.

<b>Thinking (10)</b>	<b>Application (40)</b>	<b>Knowledge (10)</b>
<b>Sketch</b> -Well planned design -shows an understanding of elements of design -image is used during for this sketch	<b>Artwork</b> - clean & neat - image is clearly a part of an animal zoomed in -design demonstrates the effective use of the elements of design	<b>Artwork &amp; Techniques</b> - skilful handling of tools to create image -health and safety guidelines followed -image was used as a reference for this artwork.